



# FASTKD3 Polyclonal Antibody

<b>Catalog No</b>	YP-Ab-00398
<b>Isotype</b>	IgG
<b>Reactivity</b>	Human;Rat;Mouse;
<b>Applications</b>	WB;IHC;IF;ELISA
<b>Gene Name</b>	FASTKD3
<b>Protein Name</b>	FAST kinase domain-containing protein 3
<b>Immunogen</b>	The antiserum was produced against synthesized peptide derived from human FASTKD3. AA range:121-170
<b>Specificity</b>	FASTKD3 Polyclonal Antibody detects endogenous levels of FASTKD3 protein.
<b>Formulation</b>	Liquid in PBS containing 50% glycerol, 0.5% BSA and 0.02% sodium azide.
<b>Source</b>	Polyclonal, Rabbit,IgG
<b>Purification</b>	The antibody was affinity-purified from rabbit antiserum by affinity-chromatography using epitope-specific immunogen.
<b>Dilution</b>	WB: 1/500 - 1/2000. IHC: 1/100 - 1/300. ELISA: 1/20000.. IF 1:50-200
<b>Concentration</b>	1 mg/ml
<b>Purity</b>	≥90%
<b>Storage Stability</b>	-20°C/1 year
<b>Synonyms</b>	FASTKD3; FAST kinase domain-containing protein 3
<b>Observed Band</b>	75kD
<b>Cell Pathway</b>	Mitochondrion .
<b>Tissue Specificity</b>	Expression detected in spleen, thymus, testis, ovary, colon, heart, smooth muscle, kidney, brain, lung, liver and white adipose tissue with highest expression in liver and thyroid.
<b>Function</b>	similarity:Belongs to the FAST kinase family.,similarity:Contains 1 RAP domain.,
<b>Background</b>	This gene encodes a member of a small family of Fas-activated serine/threonine kinase domain (FASTKD) containing proteins that share an amino terminal mitochondrial targeting domain and multiple carboxy terminal FAST domains as well as a putative RNA-binding RAP domain. The members of this family are ubiquitously expressed and are generally most abundant in mitochondria-enriched tissues such as heart, skeletal muscle and brown-adipose tissue. Some members of this protein family may play a role in apoptosis. The protein encoded by this gene interacts with components of the mitochondrial respiratory and translation networks. A pseudogene of this gene is also present on chromosome 5. Alternative splicing results in multiple transcript variants. [provided by RefSeq, Jan 2013],



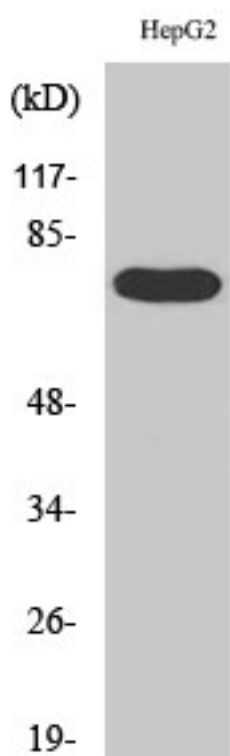
#### matters needing attention

Avoid repeated freezing and thawing!

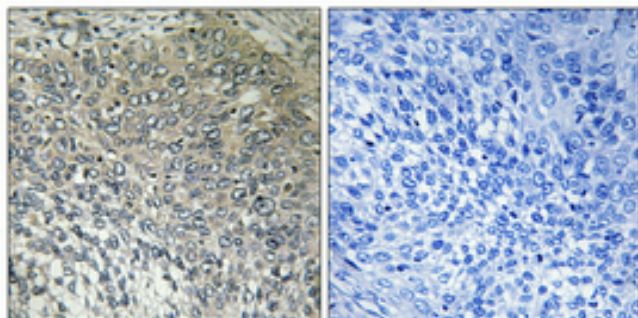
#### Usage suggestions

This product can be used in immunological reaction related experiments. For more information, please consult technical personnel.

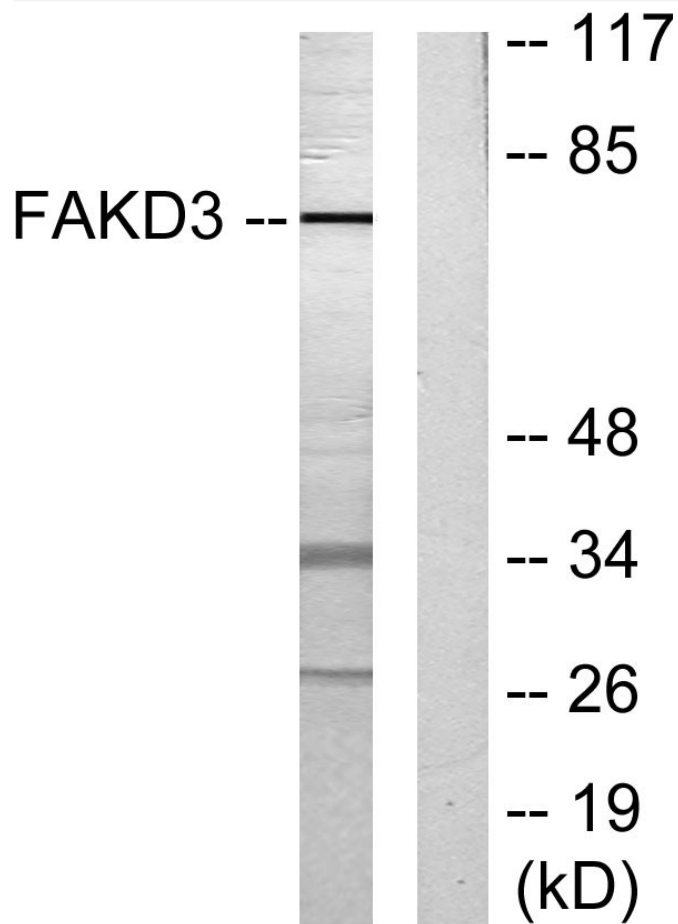
### Products Images



Western Blot analysis of various cells using FASTKD3 Polyclonal Antibody



Immunohistochemical analysis of paraffin-embedded Human cervix cancer. Antibody was diluted at 1:100 (4° overnight). High-pressure and temperature Tris-EDTA, pH 8.0 was used for antigen retrieval. Negative control (right) obtained from antibody was pre-absorbed by immunogen peptide.



Western blot analysis of lysates from HepG2 cells, using FAKD3 Antibody. The lane on the right is blocked with the synthesized peptide.